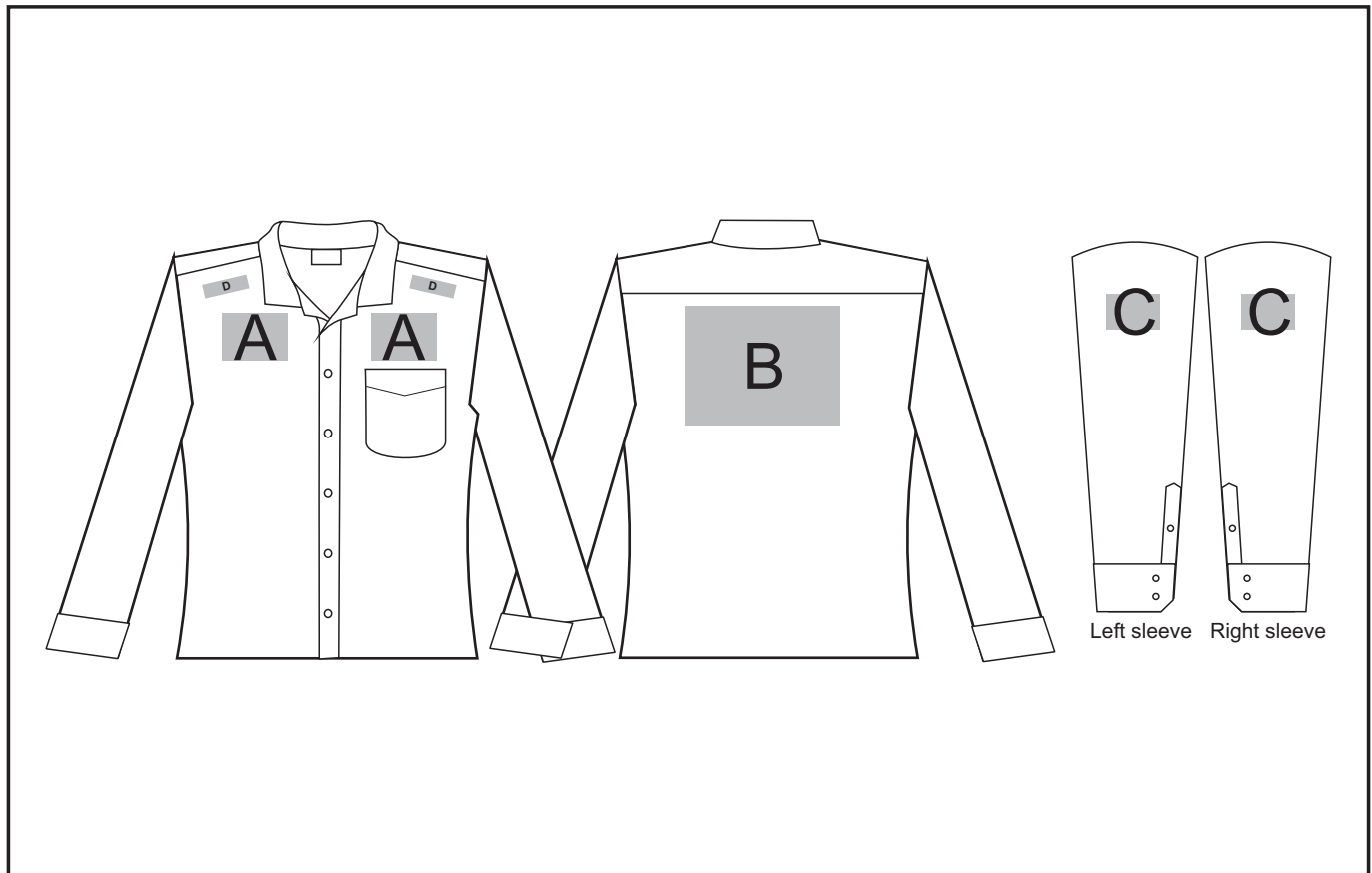


BAS-3417

Kenton Long Sleeve Shirt - Ladies



Need to know:

- Includes 1-Position Embroidery **OR** 1-Position Digital Transfer (setup fee applies)
- **EMB/DTC inclusive parameters:** Left/Right Chest = 100mm x 100mm **OR** Back = 8000mm²
- Cannot guarantee a 100% straight branding on any clothing item with check or stripe detail.
- Please note Pos D will be branded +/- 20mm from the top seam

Branding Options:

Position A

1. Embroidery (EMB) - 9 colours
Size: 100mm diameter
2. Digital Transfer Clothing (DTC) - Full colour
Size: 100mm wide x 100mm high

Position B

1. Embroidery (EMB) - 9 colours
Size: 200mm wide x 200mm high
2. Digital Transfer Clothing (DTC) - Full colour
Size: 210mm wide x 148mm high

Position C

1. Embroidery (EMB) - 9 colours
Size: 50mm diameter
2. Digital Transfer Clothing (DTC) - Full colour
Size: 50mm wide x 50mm high

Position D

1. Digital Transfer Clothing (DTC) - Full Colour
Size: 70mm wide x 20mm high